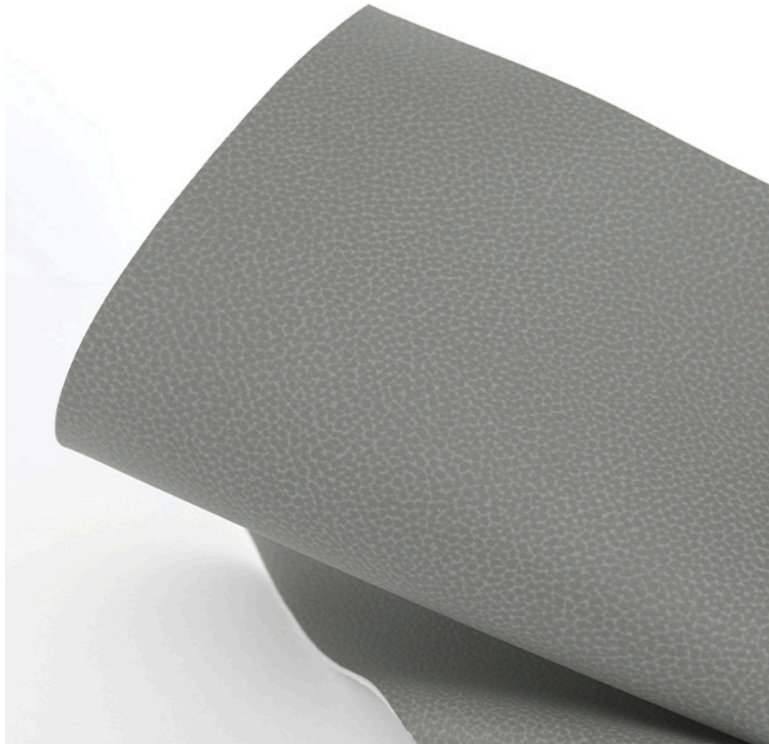




# Ultraleather<sup>®</sup> | Reef Pro



**Ultraleather<sup>®</sup> | Reef Pro** combines powerful performance with a sophisticated sensorial experience. Inspired by the natural beauty of sea coral, Reef Pro features an understated two-tone texture in a range of fresh shades. Added features include our renowned Ink & Stain Resistant solution proven to resist stubborn stains across a variety of markets.

#### Distinctive Characteristics:

- Superior durability – industry-leading 14+ weeks hydrolysis results
- Twill backcloth for durable upholstery capabilities
- 400,000 double rubs (Wyzenbeek), 200,000 rubs (Martindale)
- Enhanced resistance to tough stains including ballpoint pen, denim dye and ketchup
- Bleach cleanable (1:5 bleach/water solution)
- SCS Indoor Advantage Gold Certification

Providing hard-working upholstery solutions – the Ultraleather<sup>®</sup> family redefines performance fabrics with classic aesthetics and authentic softness.



Ink & Stain Resist

# Ultraleather® | Reef Pro

## General Specifications

### Composition:

100% Polycarbonate Polyurethane Surface  
65% Polyester, 35% Rayon Backing

### Weight:

Approx. 12.1 oz. Per Square Yard  
Approx. 410 Grams Per Square Metre

### Thickness:

Approx. 1.15 Millimetres

### Width:

54 Inches / 137 Centimetres

### Repeat:

None

## Performance

### Abrasion:

ASTM D4157 / 400,000 Double Rubs (Wyzenbeek)\*  
BS EN ISO 12947-2 / 200,000 Rubs (Martindale)\*

\*meets or exceeds

### Hydrolysis:

14+ Weeks  
ASTM D3690 Sect. 6.11 (Hydrolytic Stability)  
ISO 1419 Method C (Accelerated Ageing)

Adhesion of Coating: ASTM D751

Tear Strength: ASTM D2261

Breaking Strength: ASTM D5034

Tensile Strength: BS EN ISO 1421

## Colorfastness

Light Fastness: AATCC 16.3, 200 Hours, Grade 4  
ISO 105 B02, Grade 6

Crocking: AATCC 8, Grade 4-5 Wet & Dry

## Flammability Requirements

- ASTM E84 (Adhered) - Class A
- CA TB 117 - Pass
- FMVSS 302 & 95/28 Annex IV - Pass
- NFPA 260 - Class 1
- UFAC - Class 1

These fabrics, when treated and/or used with other compatible furniture components, have been shown to perform under the fire test conditions of:

- ASTM E84 (Unadhered)
- BS 5852 Source 0, 1 & 5 (Cig, Match & Crib 5)
- BS 5867 Part 2 Type B
- BS 7175
- FAR Specifications
- IMO Part 8
- NFPA 701

## Ultraleather | Reef Pro Resists:

- Ballpoint ink
- Blood
- Mustard and Ketchup
- Betadine
- Denim\*
- Red Wine

\* Removal of denim dye may vary depending on the period of time the stain sets in. While Pro offers excellent protection, full removal is not guaranteed.

For more information on our fabrics, cleaning and care instructions, please visit our website.



INDOOR ADVANTAGE GOLD FURNITURE

