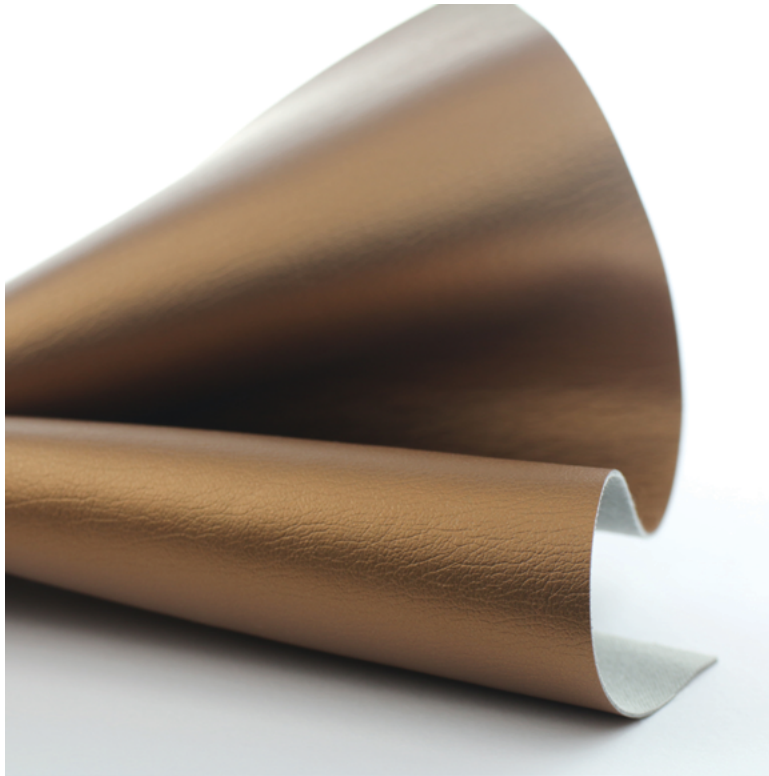




# Ultraleather® | Pearlized



**Ultraleather® | Pearlized** features a classic natural grain with a subtle luminescence that provides a hint of luxury and refinement. The color palette is chic yet transitional, sure to make a distinctive design statement.

#### Distinctive Characteristics:

- Superior durability - industry leading 14+ weeks hydrolysis results
- Reinforced rayon backing
- 400,000 double rubs (Wyzenbeek), 180,000 rubs (Martindale)
- Bleach cleanable (1:5 bleach/water solution)
- SCS Indoor Advantage Gold Certification
- Meets Healthier Hospitals Safer Chemical Challenge, V2.0

Providing hard-working upholstery solutions - the Ultraleather® family redefines performance fabrics with classic aesthetics and authentic softness.

# Ultraleather® | Pearlized

---

## General Specifications

### Composition:

100% Polycarbonate Polyurethane Surface  
100% Reinforced Rayon Backing

### Weight:

Approx. 9.7 oz. Per Square Yard  
Approx. 330 Grams Per Square Metre

### Thickness:

Approx. 0.95 Millimetres

### Width:

54 Inches / 137 Centimetres

## Performance

### Abrasion:

ASTM D4157 / 400,000 Double Rubs (Wyzenbeek)\*  
BS 2543 / 180,000 Rubs (Martindale)\*  
\*meets or exceeds

### Hydrolysis:

14+ Weeks  
ASTM D3690-02 Sect. 6.11 (Hydrolytic Stability)  
ISO 1419 Method C (Accelerated Ageing)

**Adhesion of Coating:** ASTM D751

**Tear Strength:** ASTM D2261

**Breaking Strength:** ASTM D5034

## Colorfastness

### Light Fastness:

AATCC 16.3, 200 Hours, Grade 4-5

### Crocking:

AATCC 8, Grade 4-5 Wet & Dry

## Flammability Requirements

- ASTM E84 (Adhered) - Class A
- CA TB 117-2013 - Pass
- FMVSS 302 & 95/28 Annex IV - Pass
- NFPA 260 - Class 1
- UFAC - Class 1

These fabrics, when treated and/or used with other compatible furniture components, have been shown to perform under the fire test conditions of:

- ASTM E84 (Unadhered)
- BS 5852 PT 0, 1 & 5 (Crib 5)
- BS 5867 Part 2 Type B
- BS 7175
- FAR Specifications
- IMO A.652 (16)
- NFPA 701

## Certificates and Standards

- SCS Indoor Advantage Gold Certified
  - Meets stringent chemical emission limits for various VOCs (eg. Formaldehyde)
  - Promotes healthier indoor air quality
  - Contributes towards satisfying credits under LEED® and BIFMA
  - Compliant with California Section 01350
- Meets Healthier Hospitals Safer Chemicals Challenge, V2.0

For more information on our fabrics, cleaning and care instructions, please visit our website.

