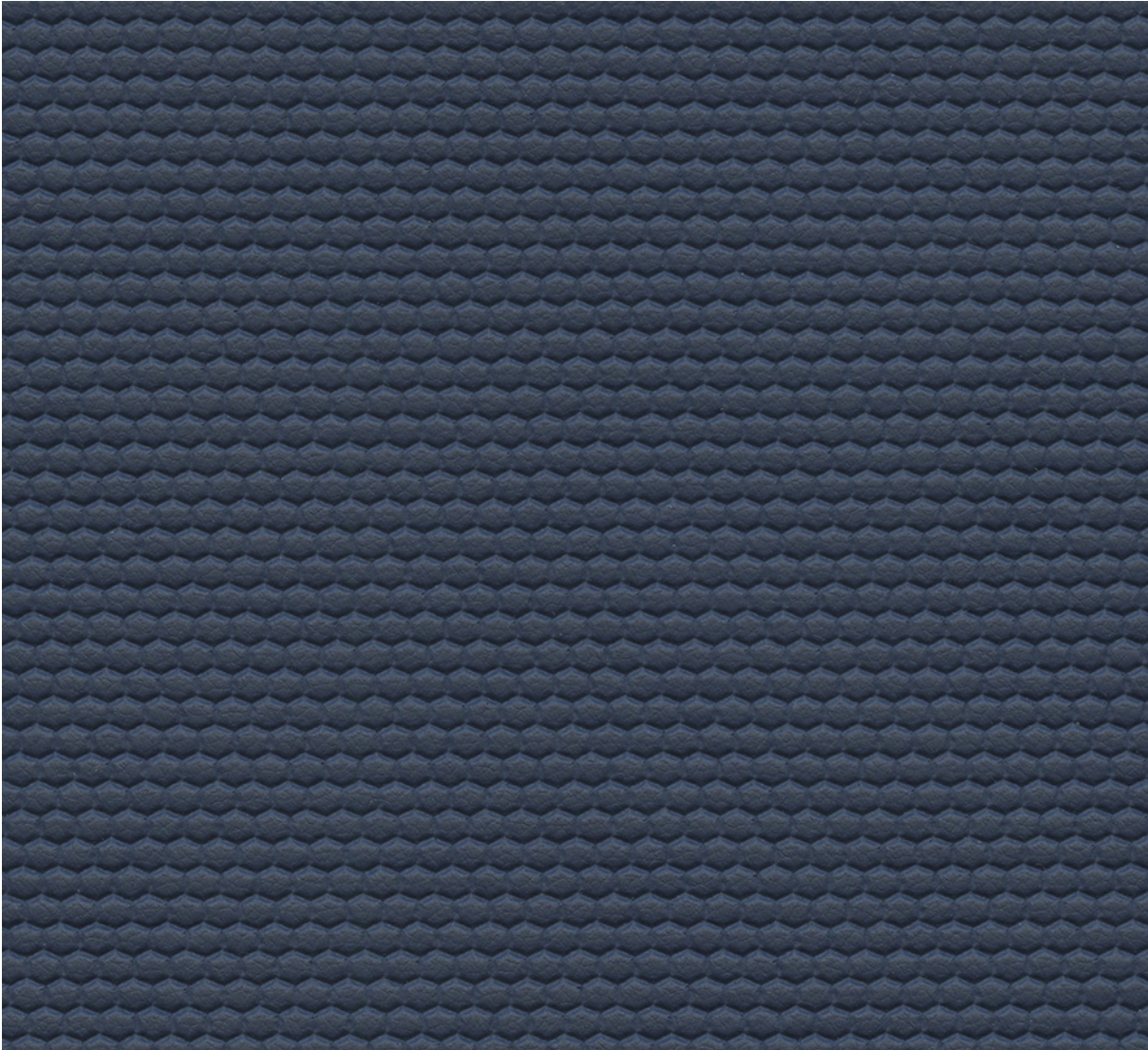
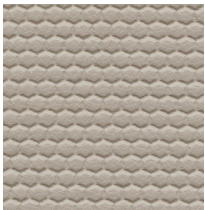




Ultraleather® | Geom



609-2556 Old Navy



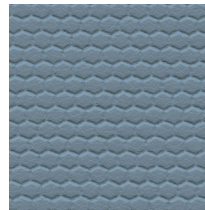
609-5684 Pale Smoke



609-3778 Penny



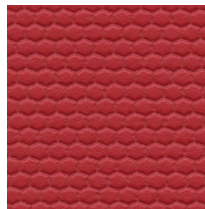
609-5763 Ashton



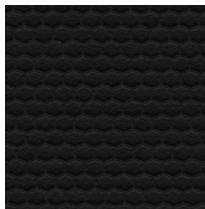
609-2552 Brook



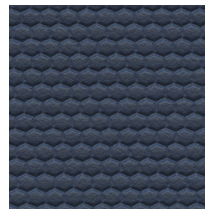
609-3602 Path



609-1176 Madrid



609-5607 Panther



609-2556 Old Navy

Ultraleather® | Geom

General Specifications

Composition:

100% Polycarbonate Polyurethane Surface
100% Reinforced Rayon Backing

Weight:

Approx. 9.7 oz. Per Square Yard
Approx. 330 Grams Per Square Metre

Thickness:

Approx. 0.95 Millimetres

Width:

54 Inches / 137 Centimetres

Repeat:

None

Performance

Abrasion:

ASTM D4157 / 200,000 Double Rubs (Wyzenbeek)*
BS EN ISO 12947-2 / 100,000 Rubs (Martindale)*

*meets or exceeds

Hydrolysis:

14+ Weeks
ASTM D3690 Sect. 6.11 (Hydrolytic Stability)
ISO 1419 Method C (Accelerated Ageing)

Adhesion of Coating: ASTM D751

Tear Strength: ASTM D2261

Breaking Strength: ASTM D5034

Tensile Strength: BS EN ISO 1421

Colorfastness

Light Fastness: AATCC 16.3, 200 Hours, Grade 4
ISO 105 B02, Grade 6

Crocking: AATCC 8, Grade 4-5 Wet & Dry

Flammability Requirements

- ASTM E84 (Adhered) - Class A
- CA TB 117 - Pass
- FMVSS 302 & 95/28 Annex IV - Pass
- NFPA 260 - Class 1
- UFAC - Class 1

These fabrics, when treated and/or used with other compatible furniture components, have been shown to perform under the fire test conditions of:

- ASTM E84 (Unadhered)
- BS 5852 Source 0, 1 & 5 (Cig, Match & Crib 5)
- BS 5867 Part 2 Type B
- BS 7175
- FAR Specifications
- IMO Part 8
- NFPA 701

For more information on certifications and standards, sustainability, as well as cleaning and care instructions, please visit our website.

